

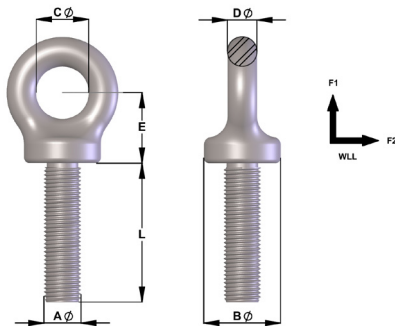
# Grade-4 Eyebolts Long Shanks AS2317

## Product Description

- Long shanks and special thread forms made to order.

### Available on Request:

- Special Thread Forms and long shanks
- Hot Dip Galvanizing
- Zinc Passivating
- Chrome Plating
- Powder Coating
- Testing and Certification



Townley Drop Forge is both NATA Accredited (Test Lab No. 13554) and AS/NZS ISO9001 Certified (Certificate number FS 604897).

Imperial AØ	Metric AØ	WLL F1	WLL F2	BØ	C	DØ	E	L
3/8"	M10	0.25t	0.06t	28	23.5	14	29	As required
1/2"	M12	0.4t	0.1t	28	23.5	14	29	As required
5/8"	M16	0.8t	0.2t	35	28	16	38	As required
3/4"	M20	1.6t	0.4t	44	32	20	44	As required
7/8"	M22	2.0t	0.5t	50	32	20	44	As required
1"	M24	2.5t	0.62t	57	38	22	48	As required
1 1/8"	M30	4t	1t	71	49	27	65	As required
1 1/4"	M33	5t	1.25t	71	49	27	65	As required
-	M36	6.3t	1.57t	87	53	35	73	As required
1 1/2"	M39	7t	1.75t	87	53	35	73	As required
1 3/4"	M42	8t	2t	102	66	40	90	As required
2"	M48	10t	2.5t	115	75	49	99	As required
2 1/4"	M56	15t	3.7t	143	97	56	124	As required
2 1/2"	M64	20t	5t	143	97	56	124	As required
3"	M76	30t	7.5t	163	106	66	140	As required

### WLL (WORKING LOAD LIMIT)

Each eyebolt is clearly stamped with the permitted F2 WLL.

**F2 WLL** - indicates safe use for non-axial lifts.

**F1 WLL** - indicates loads which are in line with the axis of the threaded end of the eyebolt. F1 WLL allows up to four (4) times higher lifting capacity whilst maintaining a 6:1 design factor of safety.