

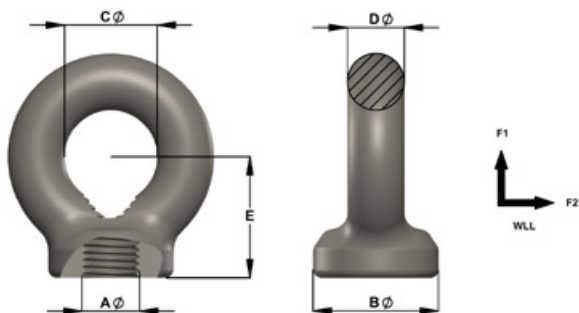
# Collared Lifting Eyenuts AS2317

## Product Description

- Manufactured using only heat certified Australian Steel
- Stamped WLL (F2)

### Available on Request:

- Special Thread forms
- Hot Dip Galvanizing, Zinc Passivating, Chrome Plating, Powder Coating
- Conformance Certification
- Testing & Certification



Townley Drop Forge is both NATA Accredited (Test Lab No. 13554) and AS/NZS ISO9001 Certified (Certificate number FS 604897)..

Imperial AØ	Metric AØ	WLL F1	WLL F2	BØ	CØ	DØ	E	Net Weight (kg)
3/8"	M10	0.25t	0.06t	28	18	11	25	0.18
1/2"	M12	0.4t	0.1t	28	23	11	25	0.18
5/8"	M16	0.8t	0.2t	35	28	16	40	0.30
3/4"	M20	1.6t	0.4t	44	32	20	44	0.57
7/8"	M22	2t	0.5t	50	33	20	44	0.57
1"	M24	2.5t	0.62t	57	38	22	51	0.85
1 1/8"	M30	4t	1t	71	48	27	65	1.60
1 1/4"	M33	5t	1.25t	71	48	27	65	1.60
-	M36	6.3t	1.57t	87	53	35	73	2.80
1 1/2"	M39	7t	1.75t	87	53	35	73	2.80
1 3/4"	M42	8t	2t	102	66	40	90	4.90
2"	M48	10t	2.5t	115	72	49	99	9.50
2 1/4"	M56	15t	3.75t	143	95	56	124	19.50
2 1/2"	M64	20t	5t	143	95	56	124	19.50
3"	M76	30t	7.5t	163	106	66	140	29.00

### WLL (WORKING LOAD LIMIT)

Each Eyebolt is clearly stamped with the permitted F2 WLL.

**F2 WLL** - indicates safe use for non-axial lifts.

**F1 WLL** - indicates loads which are in line with the axis of the threaded end of the eyebolt. F1 WLL allows up to four (4) times higher lifting capacity whilst maintaining a 6:1 design factor of safety.