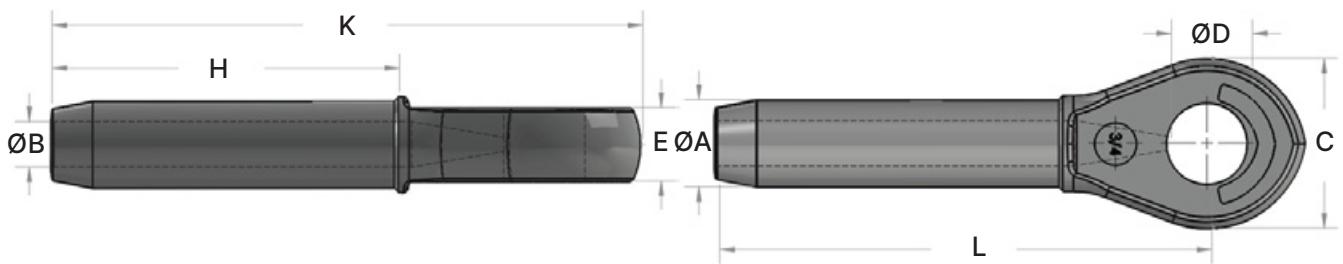


Closed Swage Sockets

Product Description

- ✓ Manufactured in USA
- ✓ Made from Carbon Steel
- ✓ Available for rope sizes 6mm to 76mm



Rope Diameter (in)	Rope Diameter (mm)	A	B	C	D	E	H	K	L	Weight (kg)	After Swage	
											Min	Max
1/4	6 - 7	12.6	6.9	36.5	19.1	12.7	54.0	111.1	88.9	0.2	10.9	11.7
5/16	8	19.6	8.6	42.9	22.2	17.5	81.0	139.7	114.3	0.3	17.2	18.0
3/8	9 - 10	19.6	10.3	42.9	22.2	17.5	81.0	139.7	114.3	0.3	17.2	18.0
7/16	11	24.9	12.3	50.8	27.0	22.2	108.0	176.2	146.1	0.7	22.0	23.1
1/2	12 - 13	24.9	13.9	50.8	27.0	22.2	108.0	176.2	146.1	0.6	22.0	23.1
9/16	14 - 15	31.9	15.5	63.5	31.8	28.3	134.9	222.3	184.2	1.3	28.3	29.5
5/8	16	31.9	17.1	63.5	31.8	28.3	134.9	222.3	184.2	1.3	28.3	29.5
3/4	18 - 20	39.2	20.2	76.2	36.5	33.3	162.0	263.5	219.1	2.3	34.7	36.1
7/8	22 - 23	43.2	23.8	88.9	42.9	38.1	188.9	307.7	257.2	3.4	37.8	39.4
1	24 - 25	50.2	27.0	101.6	52.4	44.5	215.9	349.3	292.1	5.1	44.2	45.7
1-1/8	28	57.0	30.2	114.3	58.8	50.8	242.9	387.4	323.9	7.3	50.5	52.1
1-1/4	32	64.1	33.7	127.0	65.1	57.2	269.9	438.2	365.1	10.3	56.9	58.4
1-3/8	35 - 36	71.1	36.9	133.4	65.1	57.2	296.9	479.4	400.1	13.2	63.2	65.0
1-1/2	38	78.1	40.1	139.7	71.5	63.5	323.9	517.5	431.8	17.0	69.6	71.4
1-3/4	44 - 45	86.0	47.2	146.1	90.5	76.2	377.8	609.6	508.0	25.3	75.9	77.7
2	48 - 51	99.9	53.6	196.9	96.9	82.6	431.8	698.5	584.2	40.8	88.6	90.4
2-1/4	58	113.0	59.9	219.1	109.5	101.6	485.5	755.7	631.8	56.7	100.3	102.1
2-1/2	64	125.2	67.5	219.1	109.5	101.6	498.5	790.3	666.8	64.4	110.5	112.3
3	76	151.4	3.2	235.0	134.9	136.5	603.3	958.9	816.0	114.3	133.1	134.9

CAUTION: Carbon Steel Closed Swage Sockets are recommended for use on 6 × 19 or 6 × 37 IPS or XIP, (EIP), XXIP (EEIP) IWRC regularlay ropes. Before using Swage Sockets with any other type lay, construction, or grade of wire rope, or strand, it is recommended that a test assembly be destructively tested to prove the adequacy of the assembly.