

DPLP Weld on Lifting Points

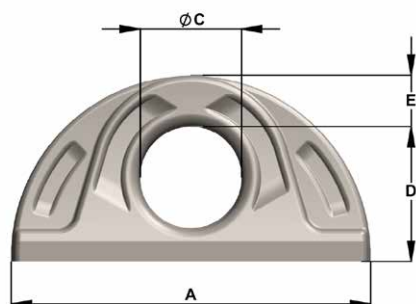
Product Description

Load Ring:

- Forged from G300 Mild Steel - AS3679.1 Grade 300PLUS
- Full Working Load Limit in all directions
- 4:1 Design Factor
- Surface Phosphated
- If using the DPLP as a lashing point, the stated WLL can be doubled
- Available in sizes 1.6t, 2.5t, 4.0t, 6.7t and 10t
- Welding shall always be carried out by a qualified person to AS1554.1:2014
- Manufactured from Steel certified to Australian Standards



Townley Drop Forge maintains a NATA Accredited Laboratory (Test Lab No. 13554) and an AS/NZS ISO9001 Certified QMS (Certificate number FS 604897)



| Part No. | WLL | A | B | C | D | E | Weight (kg) |
|----------|-------|-----|----|----|-----|----|-------------|
| DPLP160 | 1.6t | 100 | 24 | 30 | 42 | 18 | 0.58 |
| DPLP250 | 2.5t | 130 | 28 | 35 | 48 | 20 | 0.85 |
| DPLP400 | 4.0t | 160 | 38 | 45 | 62 | 22 | 1.72 |
| DPLP670 | 6.7t | 180 | 46 | 60 | 76 | 28 | 2.82 |
| DPLP1000 | 10.0t | 240 | 70 | 80 | 100 | 36 | 6.02 |